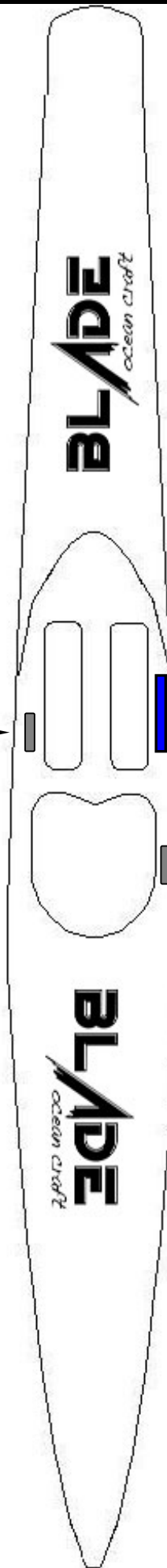


SKI – OPTIONAL EXTRAS



Left Hand Starting Block:

This second starting block is used mostly by elite or advanced paddlers for extra strength and drive at the jump-start.

“Roll Strap”:

This strap runs parallel to the edge of the ski just behind the foot straps and is used as an aid to control paddles and the ski when rolling the ski in big surf.

Right Hand Starting Block:

This is used by many paddlers to help with the push at the jump-start and to help control the paddle along the side of the ski.